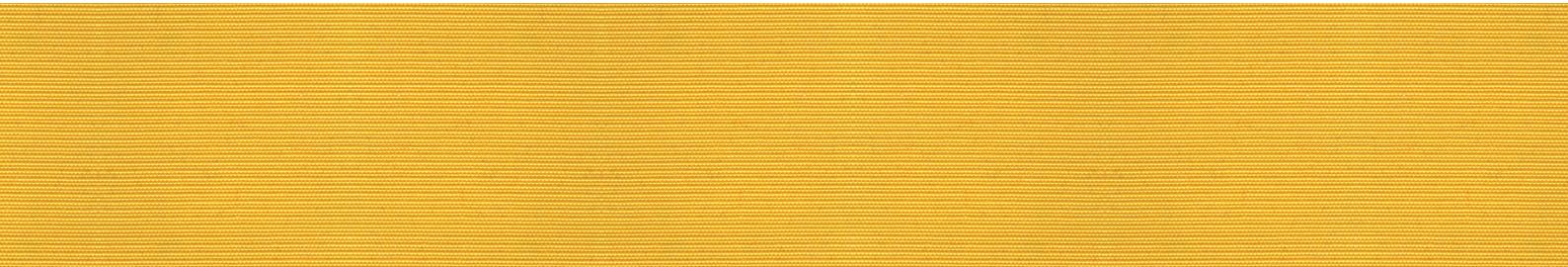


Weather**MAX**[®]
What Fabric Can Do™



Performs
Where Others Fail





WeatherMax 80

Super high strength and durability combine with long-term color retention to deliver a truly versatile outdoor fabric for a variety of applications. The industry's most balanced and cost-effective fabric available for marine covers and tops, awnings, or other outdoor applications requiring outstanding durability, higher water repellence and excellent breathability.

5-Year limited warranty

WeatherMax LT

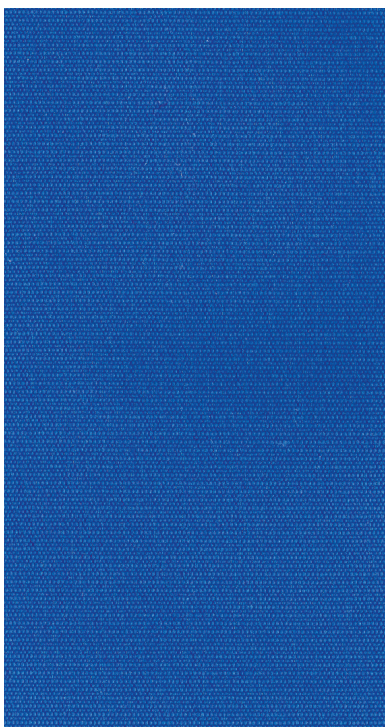
High strength and the same inherent fade resistant properties found in our WeatherMax 80 fabric, all packed into a true lighter weight fabric. The perfect choice for patio furniture covers, equestrian covers, or other applications where lightweight and ease of packing offer an advantage.

3-Year limited warranty

WeatherMax FR

The proven performance of our innovative WeatherMax 80 fabric combined with flame resistance properties that meet or exceed the most stringent requirements. WeatherMax FR is ideally suited for awnings, tents, or any outdoor application requiring resistance to heat and flames, long-term color retention and superior protection from the elements.

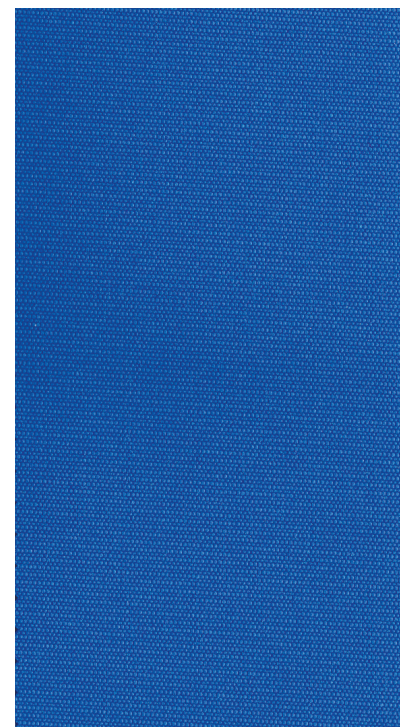
5-Year limited warranty



PACIFIC BLUE
WeatherMax 80 29346



PACIFIC BLUE
WeatherMax LT 29345

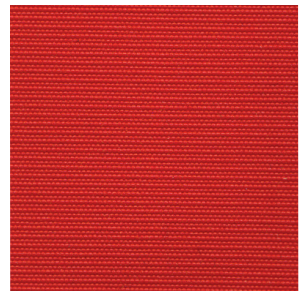


PACIFIC BLUE
WeatherMax FR FR346

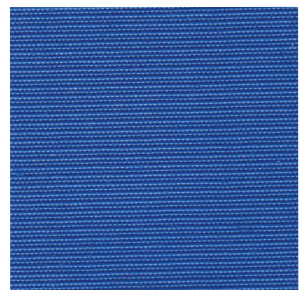
Outdoor Performance

From the blistering sun of the Australian outback to the soaking rains of the Brazilian rain forests, nothing handles the changing moods of Mother Nature better than WeatherMax®.

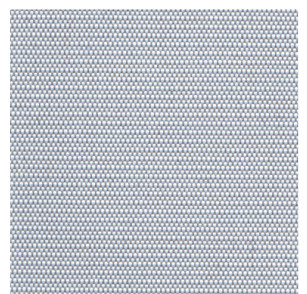
Utilizing breakthrough UV technology, WeatherMax not only goes the distance with the long term color retention of traditional acrylic fabrics, but reaches far beyond for superior water resistance and durability. With engineered yarn memory, WeatherMax always maintains a sophisticated appearance and never exhibits unsightly sagging from age, rain or exposure. Our HydroMax finish means no coatings for a cleaner environment and an excellent breathable fabric, for outstanding mold and mildew resistance. WeatherMax, a perfect balance of science, toughness and elegance combined to battle the elements and provide the finely balanced outdoor fabric you've been wanting...but couldn't get. Until now.



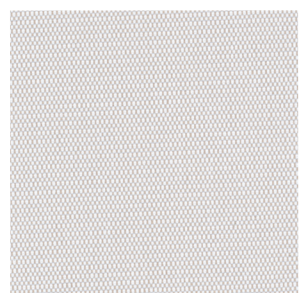
TRUE RED
 WeatherMax 80 29344
 WeatherMax LT 29343
 WeatherMax FR FR344



PACIFIC BLUE
 WeatherMax 80 29346
 WeatherMax LT 29345
 WeatherMax FR FR346



SILVER
 WeatherMax 80 29382
 WeatherMax LT 29399



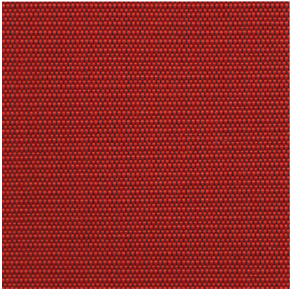
OYSTER
 WeatherMax 80 29423

“WeatherMax is our high-end fabric option. Our products are exposed to harsh elements daily and WeatherMax stands up to the abuse. Color retention is probably the most important attribute. Customers in southern climates, particularly, can be assured their covers will hold up to the wear-and-tear of UV exposure. Considering its extreme durability and abrasion resistance, our customers can't go wrong with WeatherMax”

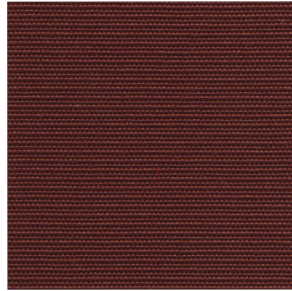
**Bill Kasper
 ShoreMaster Fabric**



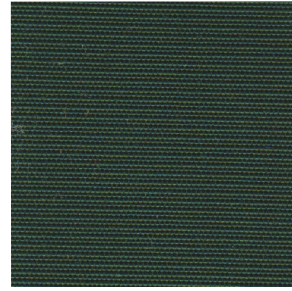
Fabric



SCARLET
WeatherMax 80 29374



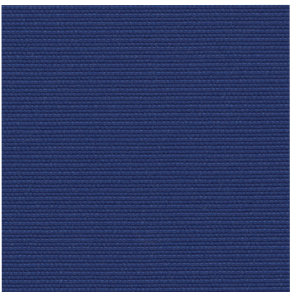
BURGUNDY
WeatherMax 80 29338
WeatherMax FR FR338



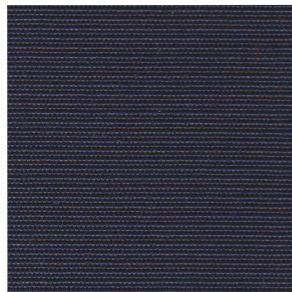
FOREST GREEN
WeatherMax 80 29342
WeatherMax LT 29341
WeatherMax FR FR342



MOSS
WeatherMax 80 29403
WeatherMax FR FR403



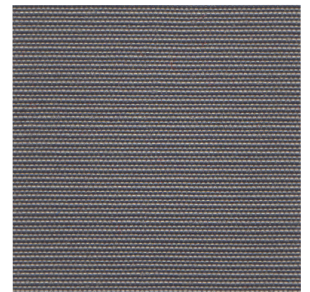
ROYAL
WeatherMax 80 29401



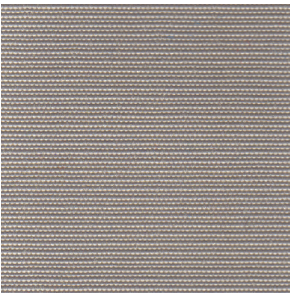
CAPTAIN NAVY
WeatherMax 80 29354
WeatherMax LT 29353



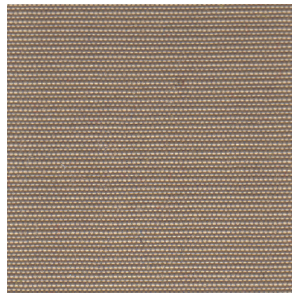
BLACK
WeatherMax 80 29355
WeatherMax LT 29335
WeatherMax FR FR355



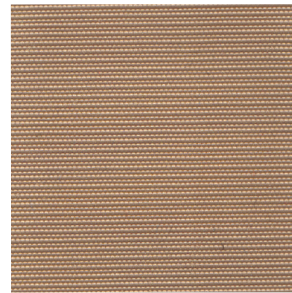
LIGHT CHARCOAL
WeatherMax 80 29334
WeatherMax LT 29333
WeatherMax FR FR334



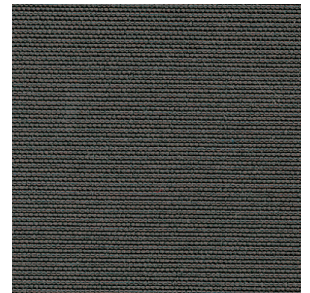
TAUPE
WeatherMax 80 29377
WeatherMax LT 29387



SAND
WeatherMax 80 29376



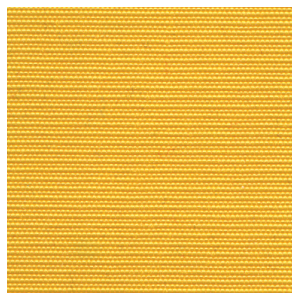
TOAST
WeatherMax 80 29348
WeatherMax LT 29347
WeatherMax FR FR348



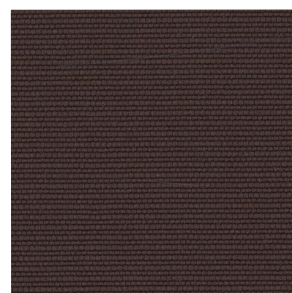
GRAPHITE
WeatherMax 80 29431



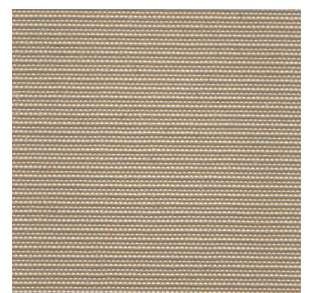
WHITE
WeatherMax 80 29371
WeatherMax LT 29372
WeatherMax FR FR371



YELLOW
WeatherMax 80 29352
WeatherMax LT 29350
WeatherMax FR FR352



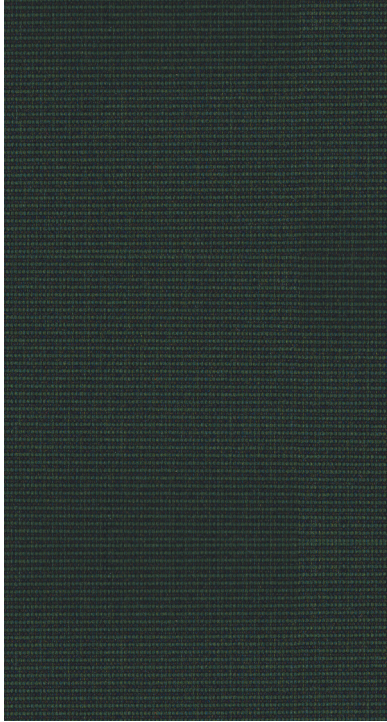
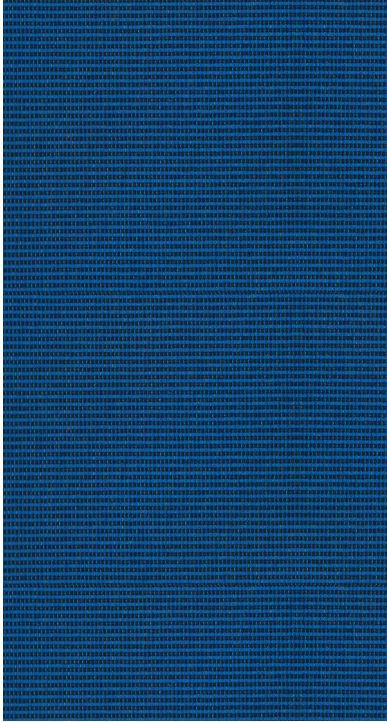
CHOCOLATE
WeatherMax 80 29430
WeatherMax LT 29429



BEIGE
WeatherMax 80 29389



TWEED LINE

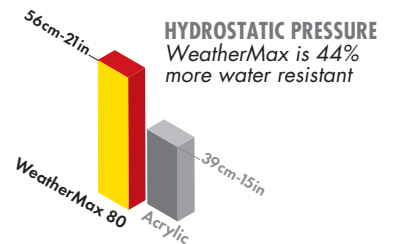
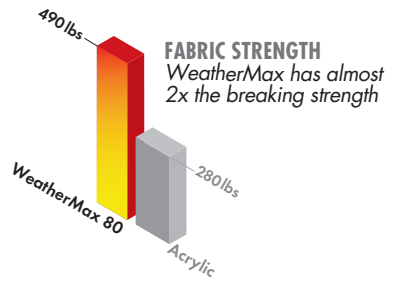
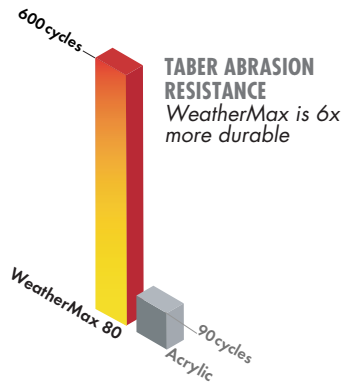
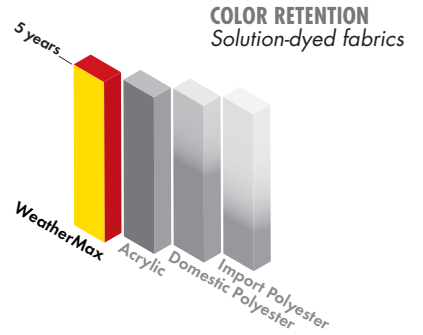


SAPPHIRE TWEED
WeatherMax 80 29396

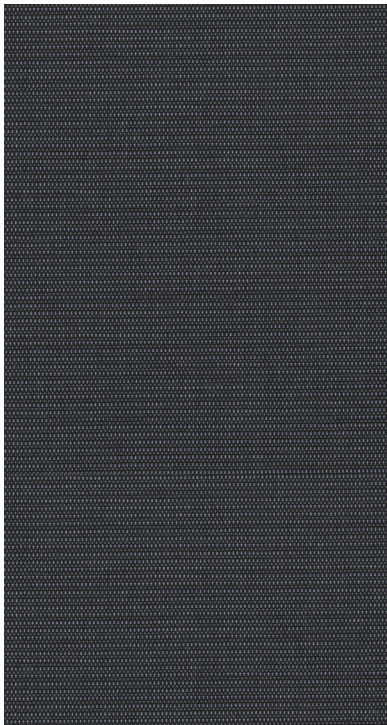
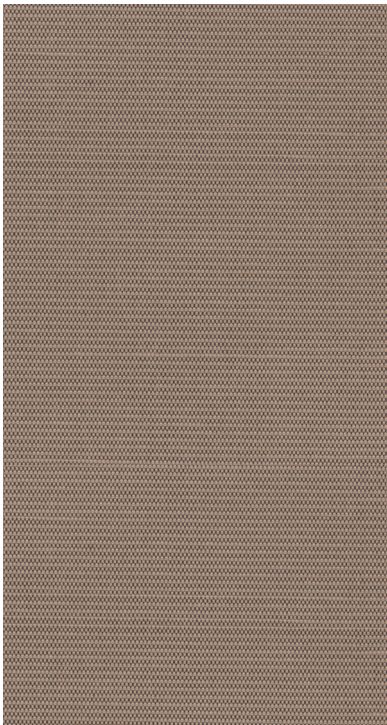
FOREST TWEED
WeatherMax 80 29397

Our WeatherMax tweed fabrics have a lighter and a darker side. Giving you the option to use either side as the outer face. All other fabric properties and overall performance remain the same.

PERFORMANCE CHARACTERISTICS



LINEN LINE



SANDSTONE
WeatherMax 80 29427

SLATE
WeatherMax 80 29428

Single Us Out

Safety Components Fabric Technologies is located on 22 acres in Greenville, South Carolina. SCFTI's 800,000 square foot facility contains all manufacturing, testing and warehousing functions. With more than 375 trained associates and equipped with the latest in fabric formation technology and equipment, Safety Components produces a diverse array of technical fabrics. Applications range from air bags, fuel cells, oil booms, soft armor, filter media, fire fighter turnout gear, ballistic luggage, to aircraft escape slides. All fabrics are produced, tested and inspected to the industry's highest standards. Safety Components Fabric Technologies maintains ISO 9001:2000, TS 16949 and ISO 14001 certifications. Our fabric testing laboratories are ISO 1725 approved, ASTM (North America), DIN (Europe), JIS (Asia), and NFPA certified. SCFTI is the only company in our industry with global certification capability. Throughout its 85 year history, Safety Components Fabric Technologies has developed a reputation for product quality, product innovation, product diversity and on-time delivery.

Specifications

Made with solution-dyed SaturaMax®



Finished with exclusive HydroMax technology for water, dirt and mildew resistance.

WeatherMax® is also available as WeatherMax®FR for flame retardant applications to meet CSFM T19, CPAI-84, NFPA701, FMVSS 302 and ASTM-E84 Class A.

WeatherMax Performance Properties			
<i>Properties</i>	<i>WeatherMax 80</i>	<i>WeatherMax LT</i>	<i>WeatherMax FR</i>
Weight (oz/yd ²) (g/m ²)	8.0 271	6.5 220	9.0 305
Width-fused edge (in) (cm)	60 152	60 152	60 152
Put Up (yards) (meters)	75 69	100 91	65 59
Tensile Strength ASTM D5034 (warp x fill/lbs)	490 x 392	430 x 270	460 x 360
Mullen Burst ASTM D3786 (psi)	420	292	393
Tongue Tear ASTM D2261 (warp x fill/lbs)	20 x 18	15 x 10	13 x 15
Taber Abrasion ASTM D3884 (cycles)	600	600	600
Hydrostatic Pressure AATCC 127 (cm)	56	42	90+
Spray Rating AATCC 22	100	100	100
Air Permeability ASTM D737 (cfm)	1.3	1.5	0.2
UPF Ultraviolet Protection Factor	50+	50+	50+
UVA & UVB Ultraviolet Blockage	Over 99%	Over 99%	Over 99%
Colorfastness AATCC 169 option 1 (1500 hours – scale 1 to 5)	4 - 5	4 - 5	4 - 5

Care Instructions

WeatherMax fabrics may be spot washed by using a soapy solution of a mild detergent and lukewarm water. Rinse thoroughly with clean water to remove soap and allow to air dry. For mildew stains, prepare a solution of one (1) cup bleach plus (1/2) cup of mild detergent per gallon of water. Spray on the entire area and allow soaking. Rinse with clean water and allow to air dry.

WeatherMax Warranty

The limited warranty covers only the fabric being unserviceable because of loss of strength and/or color from normal conditions of exposure. That includes sunlight, mildew and atmospheric chemicals. Labor and installation supplied by the fabricator and/or installer are not covered. The consumer is responsible for normal care, cleaning and maintenance of the fabric.

- The warranty runs for 5 years from the date of original purchase for WeatherMax 80.
- The warranty runs for 5 years from the date of original purchase for WeatherMax FR.
- The warranty runs for 3 years from the date of original purchase for WeatherMax LT.
- SCFTI will supply new fabric, free of charge, to replace the unserviceable fabric.
- Call your dealer who will contact SCFTI to request fabric replacement.
- A valid copy of the original invoice, showing date of purchase, is required for fabric replacement.
- This warranty gives you specific legal rights and you may also have other rights which vary from state to state.



Patent Pending. WeatherMax, WeatherMax FR, WeatherMax LT, HydroMax and ColorTite are trademarks of Safety Components Fabric Technologies, Inc. SaturaMax is a registered trademark of Unifi, Inc.



SAFETY COMPONENTS

an **itg**™ company
open the future.™

40 Emery Street
Greenville, South Carolina 29605, U.S.A.
800-896-6926 ext. 14 • www.weathermax.net